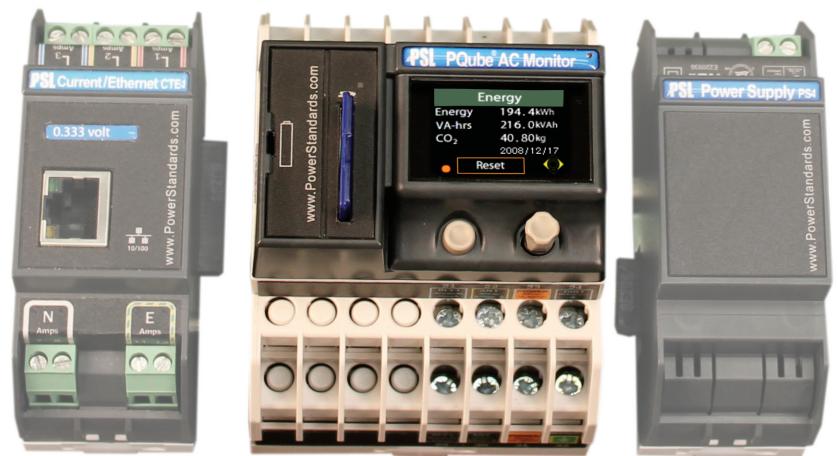
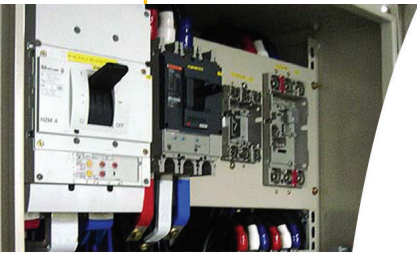


# PSL



## LOW-COST, HIGH-PRECISION POWER QUALITY & ENERGY MONITORING



## PQube<sup>®</sup> POWER QUALITY & ENERGY ANALYZER

AC AND DC MONITORING  
LAB-GRADE ACCURACY  
MODULAR & EMBEDDABLE  
PLUG-AND-PLAY FUNCTIONALITY  
DIRECT REMOTE COMMUNICATION  
**NO SOFTWARE REQUIRED**

FC  
RoHS CE            

 **PQube<sup>®</sup>**  
Go Green. Know your power.™



## General

- Three-phase, single-phase and split-phase monitoring 100~690V, 50/60/400Hz.
- Self-configuration—auto-detects single-phase, 3-phase, phase-to-phase, wye, nominal voltage, nominal frequency, and more.
- Two analog inputs, one digital input, up to 4 relay outputs, two temperature-humidity channels.
- Direct connect to 100~690V—no PTs required.
- Powers from 24 VAC, 24~48VDC, or 100~240 VAC with optional PS1 plug-in module.
- Built-in, self-rechargeable Li-Ion UPS with up to 9 minutes of backup power.
- Automatic data storage on included 4GB SD card (up to 2 years of data)
- Full color organic LED display, 35 built-in languages.
- DIN-rail or optional panel mount bracket.

## Power Quality Monitoring

- High-speed 256-samples-per-cycle recording.
- Power quality disturbances recorded with waveforms and RMS graphs.
- Voltage sags, swells and interruptions; over-frequency and under-frequency events; 1 micro-second high-frequency impulse detection; time-triggered snapshots.
- Voltage THD, current TDD and current THD; voltage and current unbalance; VARs (fundamental and Budeanu); VAR-hr accumulator; flicker (Pinst, PST, PLT).
- Voltage and current harmonics and interharmonics—up to the 63rd, with statistics.
- Daily, weekly, monthly trends. Cumulative probability, histograms, and more.



pqube.com



map.pqube.com

## Energy (with Current module)

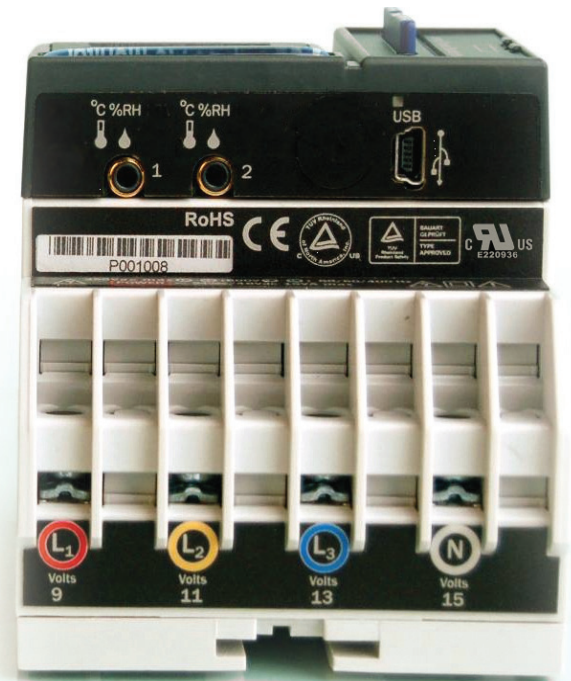
- Watts, VA, VARs, True Power Factor, Watt-hours, VA-hours, VAR-hours.
- Carbon footprint meter (in kg), CO<sub>2</sub> generated and avoided.
- Peak averages—single-cycle, 1-minute and 15-minute, and at user-selected intervals.
- CT ratios support up to 50,000 amps; PT ratios support up to 6,900,000 volts.
- Daily, weekly, monthly trends; load duration curves and more.
- Energy accumulators—daily, weekly, monthly.

## Communication (with Ethernet module)

- Direct remote access to built-in web server—NO SOFTWARE REQUIRED.
- Instant email notification after a power quality disturbance or end of trend interval.
- Free email account.
- Modbus-TCP—read meters with any client, anytime.

## Compliance

- Safety: UL, TUV, ISA-82.02.01 (IEC 61010-1 MOD), CAN/CSA-C22.2 NO.61010-1, Japan S-mark, GS, CE.
- Immunity: IEC 61000-4-5 (6kV peak 100kHz surge), IEC 61000-4-4 (4kV peak EFT bursts), IEC 61000-4-2 Level 1 and MIL-STD-883 (electrostatic discharges), IEC 61000-4-3 (radio frequency fields), IEC 61000-4-8 (magnetic fields).
- Emissions: EN 55022 and CISPR 22, radiated and conducted RF emissions.
- Accuracy: Full NIST-trace certificate for each PQube.



PQube - Actual Size